



OWEN

METALS GROUP



**METALS PROCESSING AND DISTRIBUTION,
MACHINING, FABRICATION, PAINTING AND CASTINGS**



METAL PROCESSING

FIRST STEP METALS PROCESSING WITH EXPERT CAPABILITIES RANGING FROM SMALL, SIMPLE CUT PARTS TO LARGE, MULTI-PROCESSED COMPONENTS

Owen Metals Group focuses on providing all your steel needs. These services range from fabrication, welding, casting, and machined parts. From idea to final product, we will be with you every step of the way.

We believe in the mutual benefits of a long-term partnership. We strive to be a single source for your custom metal fabrication and manufacturing needs; building a relationship that is beneficial for our partnership in the years to come. When you choose Owen Metals Group, you will benefit from our competitive pricing, efficient timeline,

and on-time delivery. Our manufacturing technologies can handle any size job, ranging from individual components to high-volume assemblies.

We take pride in our customer service with up-to-the-minute job tracking and follow-up. Our commitment to quality is clear throughout every process.



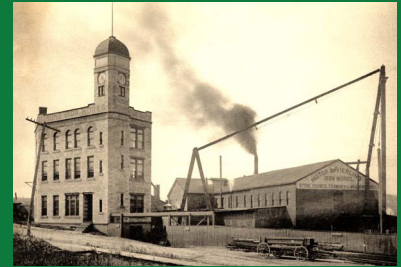
OWEN
METALS GROUP

METAL FABRICATION

OWEN DELIVERS CNC BENDING UP TO 750 TONS, PLATE ROLLING, AND MORE

We are a world-class contract-manufacturing partner who can build-to-print or work with you to craft an entirely new component. From design and programming to modeling and assembly, we have the expertise to help make your vision a reality. Nuclear compliant quality is the default for most of our industrial fabrication products. Owen integrates processing with assembly and welding operations to ensure an efficient outcome every time.

Our facilities house some of the largest and most versatile equipment available. We have a large inventory of products, including sheet, plate, structural, tool steel, and long stock. Our capabilities extend to precision cutting, drilling, sawing, bending, blasting, painting, and much more. With more than 500,000 rail-serviced square feet under one roof and 30 acres of storage area; we can craft solutions to the largest of your challenges.



EST. 1885

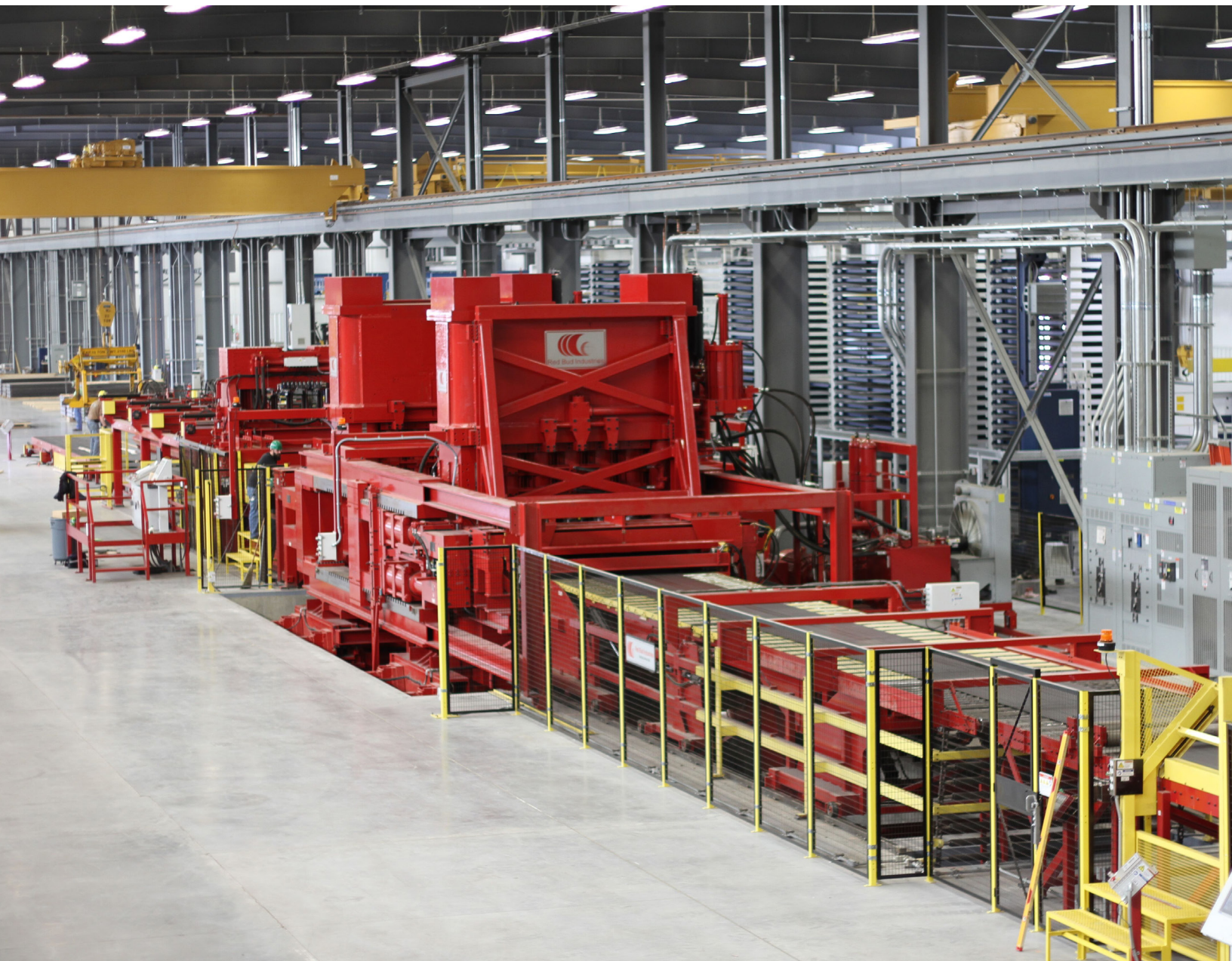
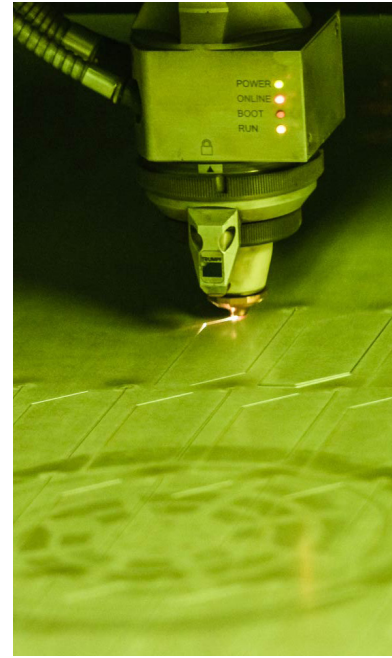
Owen has been leading the steel industry for over a century, with a legacy extending to 1885. Our commitment to excellence and innovation has propelled the company's growth, as well as our long-standing relationships with customers. Our unrivaled attention to quality and our ongoing investments in best-in-class technology exemplify this commitment.

Owen is a partner you can depend on, time and time again, to provide the engineering insight, materials, and production capabilities to satisfy the requirements of your projects quickly. Our robust steel expertise and top-notch facilities are unparalleled. When you work with us, you will discover knowledgeable people who take pride in conducting business with integrity while striving to exceed your expectations.

MACHINING

OUR MACHINE SHOPS ARE EQUIPPED TO PRODUCE HIGH-END PRODUCTS. WE UTILIZE A COMBINATION OF MULTI-TOOL CNC MACHINING CENTERS

Machine operators receive specialized training for precision parts production, assuring a high level of quality and superior fit-up characteristics on finished parts. Our machine center employees are experts who understand your need for quality, on-time results.



TUBE LASER CUTTING

OUR UNIQUE 3D CUTTING SYSTEMS ALLOW FOR UNSURPASSED ACCURACY FOR THE BEST POSSIBLE FIT UP, AND COMBINED WITH OUR LOAD AND GO TECHNOLOGY, MAKES MANUFACTURING A BREEZE

Tube laser cutting applies the process and technology of laser cutting to beams, tube, channels and pipe. The laser cutting process precisely consolidates multiple operations that typically require various setups along with additional handling and labor.



STRETCHER LEVELING

OUR STRETCHER LEVELER WORKS BY STRETCHING THE ENTIRE CROSS-SECTION OF THE COIL BEYOND ITS YIELD POINT FROM TOP TO BOTTOM AND SIDE-TO-SIDE, EFFECTIVELY EQUALIZING THE RANDOM STRESSES AND ELIMINATING SPRING BACK

Material is stretched only a small amount by non-marking metallic grippers that handle even heavily-oiled material. Your order is processed to your specification every time, offering peace of mind and lights-out processing.

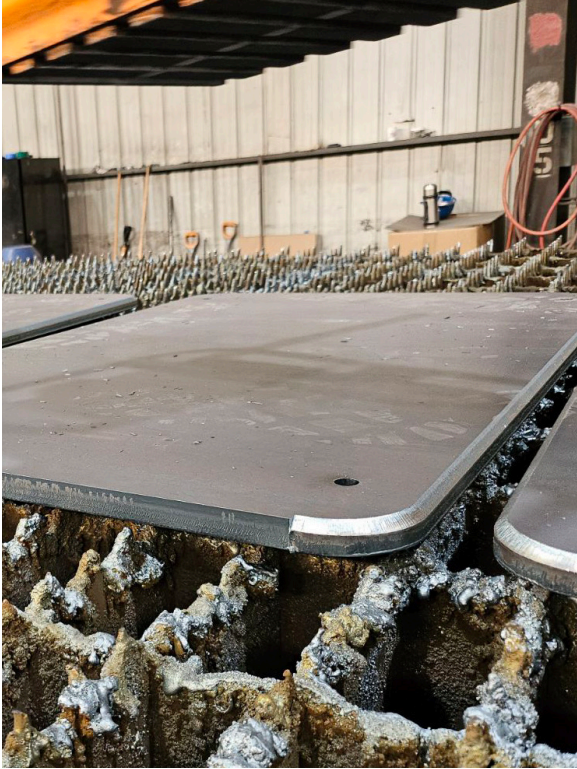
OXY FUEL & PLASMA CUTTING

Our redundant plasma and flame cutting tables cut up to 6" thick and have the ability to add drilled holes. Even with our technology to laser cut up to a 2" plate, we still retain the equipment and skill to also cut plates the old fashioned way.

LARGE INVENTORY OF ALL METAL TYPES

Owen offers a wide selection of competitively priced plates in carbon, aluminum, galvanized and stainless materials. We combine industry-leading technology with generations of steel expertise. We've expanded our processing capacity to handle oversized and thicker gauges of steel sheet and plate.





POWDER COATING

OUR FINISHING DIVISIONS EMPLOY STATE OF THE ART, LEVEL II POWDER APPLICATION SYSTEMS PROVIDES ADVANCED COATING DURABILITY AND QUALITY OVER TRADITIONAL POWDER SYSTEMS

We utilized next generation application technology engineered in a dual powder prime configuration, which provides enhanced coating durability and quality over traditional powder systems. We offer inline prime and top-coat finish booths that can be used independently or in combination to provide a level II finish proven to outlast all other direct-to-metal applications. Standard and special-order paint colors available.

ADVANCED LASER CUTTING

OUR HIGH-VOLUME LASERS CUT STEEL UP TO 1½" THICK. CREATE INTRICATE DESIGNS WITH EXTREME ACCURACY

The laser cutting operations at Owen Metals Group facilitate compressed product development cycles, support just-in-time delivery, and produce economical, low-lot-size requirements for one-of-a-kind parts or large production runs. Efficient, automated laser cutting can occur at any time of day with no supervision required.

Our people, processes, and laser cutting equipment provide due diligence, so when the parts hit your production line, they are on time and to your specifications.





CUSTOMER SERVICE

WE TAKE GREAT PRIDE IN RELATIONSHIPS

Throughout the Midwest, our customers have made us their first choice for competitive pricing, exceptional delivery, and unmatched performance and value. From top to bottom, we are dedicated to ensuring your partnership with us is both positive and productive.

STEEL CASTINGS

WE DESIGN AND PRODUCE INNOVATIVE CASTING SOLUTIONS FOR INDUSTRIES THAT DEMAND OPTIMAL PERFORMANCE AND RELIABILITY

Beginning in Omaha, Nebraska, in the early 20th-century casting parts for infrastructure and transportation, we now represent the leading edge of what a steel foundry can be. Our long history in the steel industry tells the story of where we've been. But just as important, we know where we're going.

Owen Metal Groups' complete vertical integration enables us to perform a variety of services for you – all with results that exceed expectations. The expertise and collaboration of our engineering team provides you with a one-stop shop for pattern and mold creation, pouring, heat treating and precise inspection that yields the best attainable parts.



OWEN
METALS GROUP



NPF
FINISHING

NPS
METALS

MVS
METALS

OSC
CASTINGS

PVF
FINISHING

PVS
METALS

OWEN will provide the timely delivery of products that meet the performance and quality standards set by our customers. Owen Metals Group will optimize the output of both staff and equipment while ensuring long term sustainability and viability for the future.

NPS METALS
Steel Service Center
Division
1st Step Processing
Fargo, ND

NPF FINISHING
Powder Coating
Casselton, ND

MVS METALS
1st Step Processing
Manufacturing
Sioux City, IA


OMAHA STEEL
Castings
Wahoo, NE

PVF FINISHING
Powder Coating
Omaha, NE

PVS METALS
Steel Service Center
Division
1st Step Processing
Omaha, NE

OWEN METALS GROUP
500 Avenue H, Carter Lake, IA 51510

 owenmetalsgroup.com

 800.831.9252

 info@owenmetalsgroup.com

